

# Cynomolgus IL-6 Protein

Cat. No. IL6-CM001



## Description

<b>Source</b>	Recombinant Cynomolgus IL-6 Protein is expressed from HEK293 with His tag at the C-Terminus. It contains Ala28-Met212.
<b>Accession</b>	P79341
<b>Molecular Weight</b>	The protein has a predicted MW of 22.06 kDa. Due to glycosylation, the protein migrates to 25-30 kDa based on Bis-Tris PAGE result.
<b>Endotoxin</b>	Less than 1EU per µg by the LAL method.
<b>Purity</b>	> 95% as determined by Bis-Tris PAGE > 95% as determined by HPLC

## Formulation and Storage

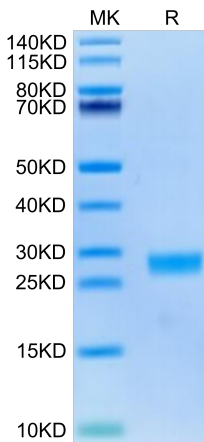
<b>Formulation</b>	Lyophilized from 0.22µm filtered solution in PBS (pH 7.4). Normally 8% trehalose is added as protectant before lyophilization.
<b>Reconstitution</b>	Centrifuge the tube before opening. Reconstituting to a concentration more than 100 µg/ml is recommended. Dissolve the lyophilized protein in distilled water.
<b>Storage</b>	-20 to -80°C for 12 months as supplied from date of receipt. -80°C for 3 months after reconstitution. Recommend to aliquot the protein into smaller quantities for optimal storage. Please minimize freeze-thaw cycles.

## Background

IL-6 (Interleukin-6) is a pleiotropic cytokine that acts in the acute phase reaction, inflammation, hematopoiesis, bone metabolism, and cancer progression. Interleukin 6 has been shown to interact with interleukin-6 receptor and glycoprotein.

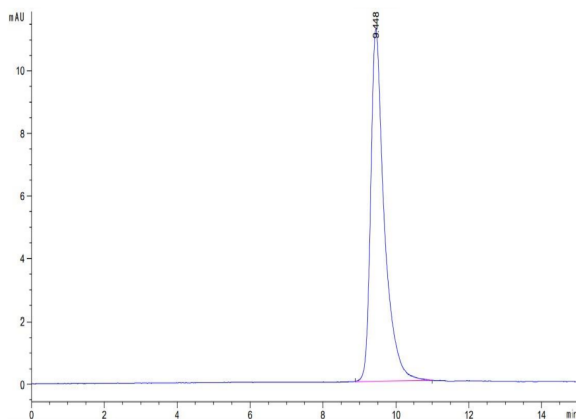
## Assay Data

### Bis-Tris PAGE



Cynomolgus IL-6 on Bis-Tris PAGE under reduced condition. The purity is greater than 95%.

### SEC-HPLC



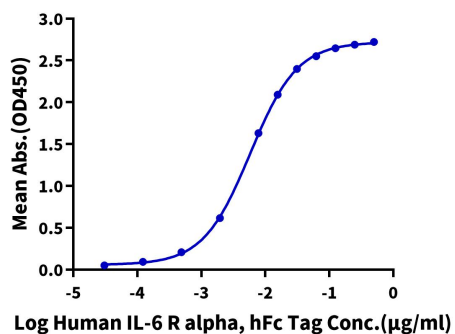
The purity of Cynomolgus IL-6 is greater than 95% as determined by SEC-HPLC.

Assay Data

ELISA Data

**Cynomolgus IL-6, His Tag ELISA**

0.5µg Cynomolgus IL-6, His Tag Per Well



Immobilized Cynomolgus IL-6, His Tag at 5µg/ml (100µl/well) on the plate. Dose response curve for Human IL-6 R alpha, hFc Tag with the EC50 of 5.8ng/ml determined by ELISA.